

2026

SARAH LEVIN DESIGNS

INTERIOR DESIGN PORTFOLIO 2026

PLEASE NOTE SOME SAMPLES ARE COLLABORATIVE



(THREE)

DOLLIS

(SIX)

WINDSOR

(NINE)

SUNDERLAND

(TWELVE)

NORFOLK

(FIFTEEN)

AVENUE

(EIGHTEEN)

PRIVATE SUITE DESIGN

(TWENTY)

SOCIAL LAB

(TWENTY ONE)

MIRESBALL CONCEPT

INDEX

DOLLIS



THE DOLLIS COMMUNITY CENTRE IS A COMMUNITY-FOCUSED FACILITY IN EAST LONDON DESIGNED TO FOSTER CONNECTION AND INCLUSIVITY WITHIN THE LOCAL AREA. THE PROJECT CREATES A WARM, ADAPTABLE ENVIRONMENT THAT BALANCES CONTEMPORARY AESTHETICS WITH PRACTICAL FUNCTIONALITY. A RESTRAINED NEUTRAL PALETTE, COMPLEMENTED BY BRUSHED BRASS ACCENTS, MATTE BLACK DETAILING, AND TEXTURED 3D WALL PANELLING, ESTABLISHES A REFINED YET WELCOMING SPACE SUITABLE FOR A WIDE RANGE OF USERS AND ACTIVITIES.

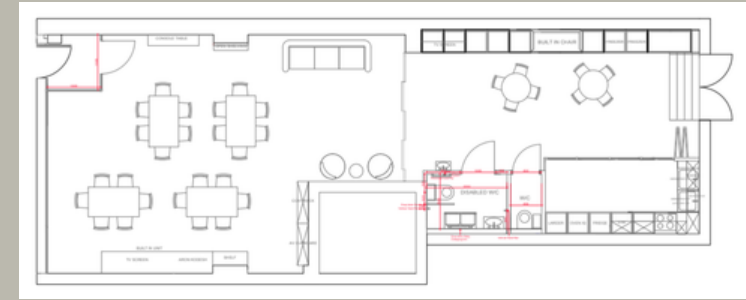


DOLLIS DRAWINGS



FLOOR PLAN

(01)



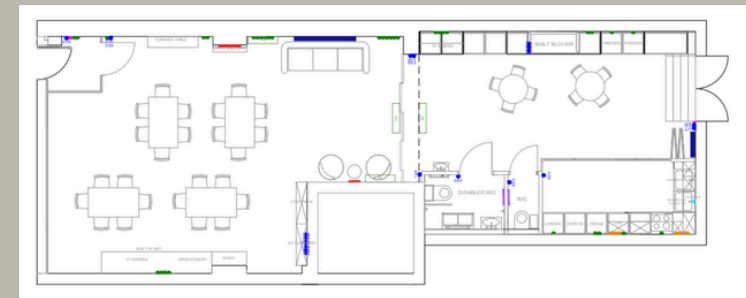
RCP

(02)



ELECTRIC PLAN

(03)



DOLLIS MATERIALITY



WINDSOR



INTERIOR ARCHITECTURAL DESIGN AND FURNISHING FOR A HIGH-END RESIDENTIAL DEVELOPMENT COMPRISING TWO GRADE II LISTED HOMES IN A PRESTIGIOUS SETTING NEAR WINDSOR CASTLE AND THE RIVER THAMES.

THE SCHEME CAREFULLY BALANCES CONTEMPORARY LIVING WITH THE PRESERVATION OF ORIGINAL PERIOD FEATURES, SUPPORTED BY A CALM, NEUTRAL PALETTE LAYERED WITH WARMTH AND SUBTLE CONTRAST. SPATIAL PLANNING, INTERIOR SCHEMES, AND TURNKEY FURNISHING WERE DEVELOPED COLLABORATIVELY TO DELIVER COHESIVE, REFINED HOMES SUITED TO MODERN LIFESTYLES.



WINDSOR DRAWINGS



FLOOR PLAN

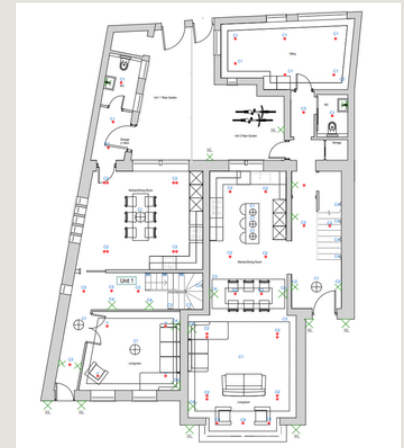
(01)



ELECTRICAL PLAN

(03)

LIGHTING PLAN (02)

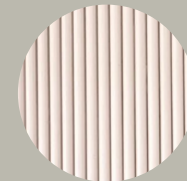
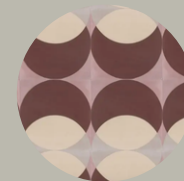


SUNDERLAND

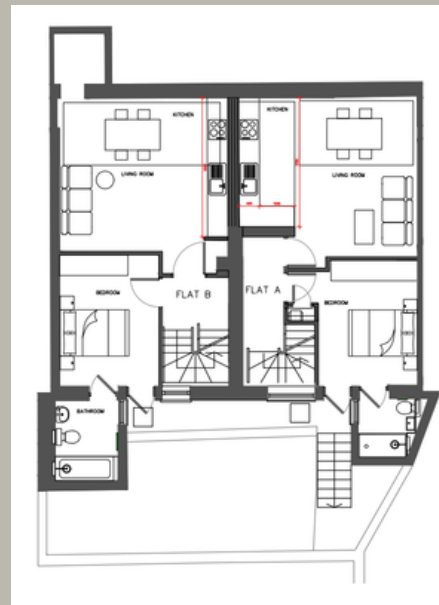


A TWO STOREY, TWO UNIT DEVELOPMENT DESIGNED AROUND DYNAMIC CONTRAST AND SOFT, ORGANIC FORMS. STATEMENT BURGUNDY TILE AND SCULPTURAL LIGHTING INTRODUCE BOLD FOCAL POINTS, BALANCED BY CURVED ELEMENTS THAT SOFTEN THE OVERALL COMPOSITION.

LARGE, BRIGHT WINDOWS FLOOD BOTH LEVELS WITH NATURAL LIGHT, CREATING VISUAL CONNECTION THROUGHOUT, INCLUDING SIGHTLINES FROM THE FIRST FLOOR PRIMARY BEDROOM DOWN TO THE GROUND LEVEL. PLAYFUL PATTERNS AND LAYERED FINISHES ADD PERSONALITY, RESULTING IN A MODERN YET ECLECTIC DESIGN TAILORED TO STAND OUT IN THE RENTAL MARKET AND ATTRACT FUTURE TENANTS.



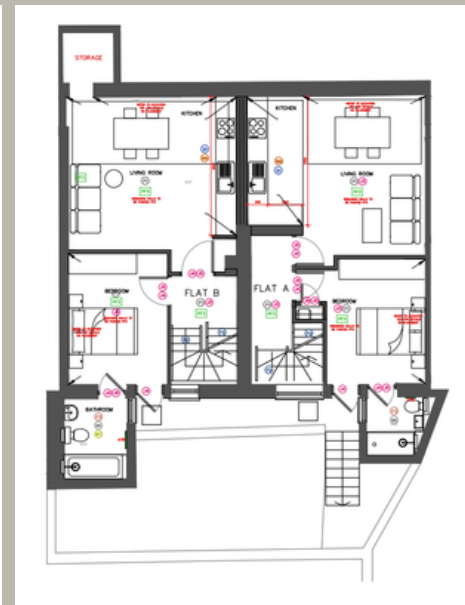
SUNDERLAND DRAWINGS



FLOOR PLAN



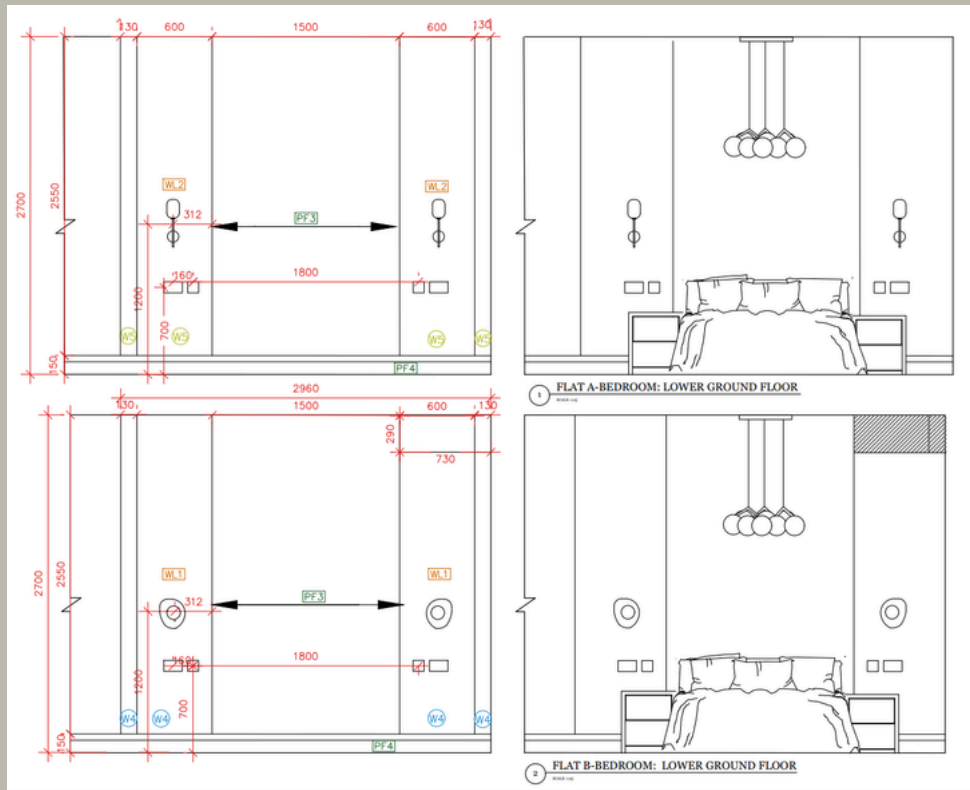
(01) LIGHTING PLAN



(02) ELECTRICAL PLAN (03)

SUNDERLAND

MATERIALITY



MASTER BEDROOM ELEVATION

(01)

MASTER BEDROOM RENDER (02)

NORFOLK



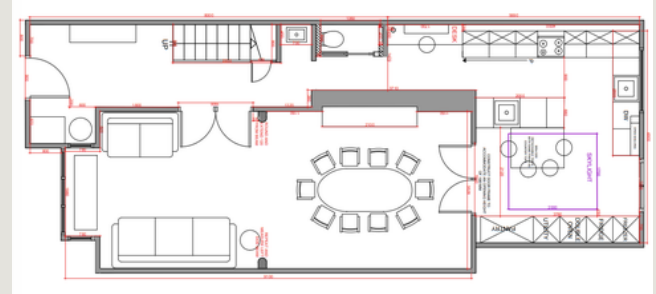
THIS EAST LONDON RESIDENCE IS DEFINED BY STRONG DESIGN MOVES AND A CLEAR, COHESIVE VISION. STATEMENT LIGHTING, LAYERED TEXTURES, AND CUSTOM MILLWORK SHAPE THE CHARACTER OF THE HOME, CREATING DEPTH AND INTEREST THROUGHOUT. EACH SPACE CONNECTS NATURALLY TO THE NEXT, WITH TACTILE FINISHES AND TAILORED FURNISHINGS ADDING WARMTH AND REFINEMENT. THOUGHTFUL DETAILING AND CAREFULLY SELECTED FIXTURES BRING BALANCE AND CONTINUITY, RESULTING IN A HOME THAT FEELS POLISHED, DISTINCTIVE, AND EFFORTLESSLY PULLED TOGETHER.

NORFOLK DRAWINGS



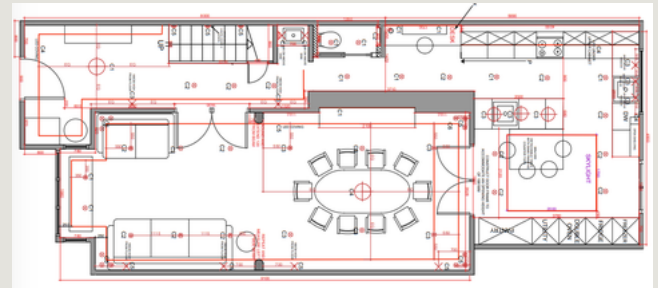
FLOOR PLAN

(01)



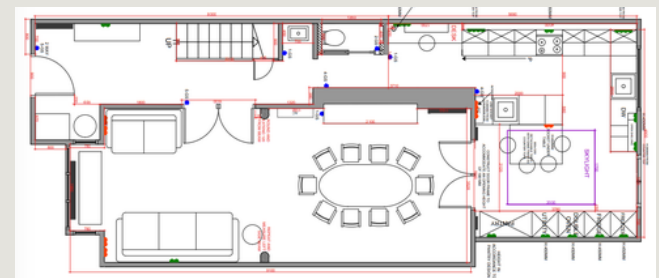
RCP

(02)



ELECTRIC PLAN

(03)



NORFOLK

MATERIALITY



AVENUE



THE FOREST HILL PENTHOUSE REFRESH TRANSFORMS THE SPACE INTO A BOLD, REFINED BACHELOR PAD. STATEMENT WALLPAPERS AND DEEP BLACK FINISHES CREATE A DRAMATIC, CONTEMPORARY ATMOSPHERE, WHILE A CURATED MIX OF UNIQUE TEXTURES ADDS DEPTH AND PERSONALITY. FROM THE TEXTURED DINING ROOM WALLS TO THE ELEVATED BLEND OF SOFT NEUTRALS IN THE PRIMARY BEDROOM, EACH SPACE IS THOUGHTFULLY DESIGNED TO BALANCE INTENSITY WITH MOMENTS OF CALM AND SOPHISTICATION.

AVENUE CONCEPT



AVENUE FINAL PRODUCT



PRIVATE SUITE DESIGN



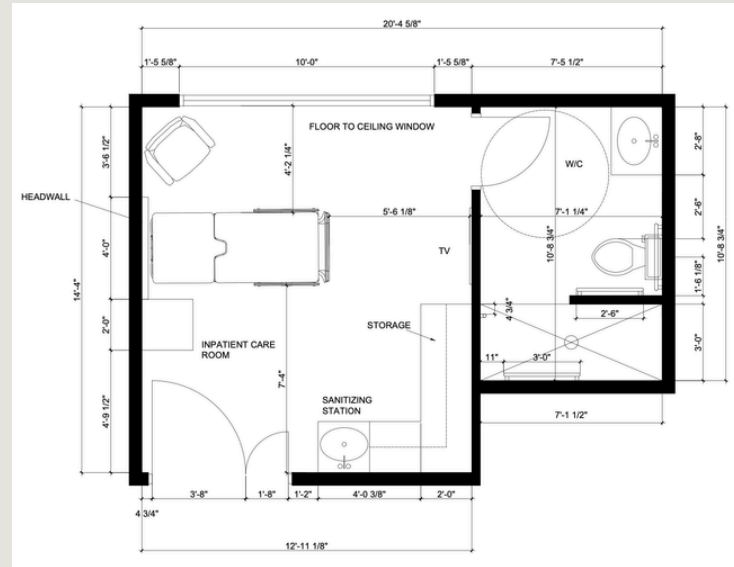
I WAS INSPIRED TO CREATE AN ELEVATED HOSPITAL SUITE BY HARMONIZING COMFORT AND SLEEK DESIGN ELEMENTS SUCH AS MARBLE AND GEOMETRIC SHAPE. HOSPITALS CAN BE PERCEIVED AS UNCOMFORTABLE, FOR THIS REASON I WAS INSPIRED BY UPSCALE HOTELS FOR MY HOSPITAL SUITE DESIGN TO ENHANCE RELAXATION IN PATIENTS REHABILITATION JOURNEY. FOR MY RENDERING, I USED AUTOCAD FOR THE FLOOR PLAN AND SKETCHUP, ENSCAPE, AND ADOBE PHOTOSHOP FOR THE RENDERINGS.

PRIVATE SUITE DESIGN



FLOOR PLAN

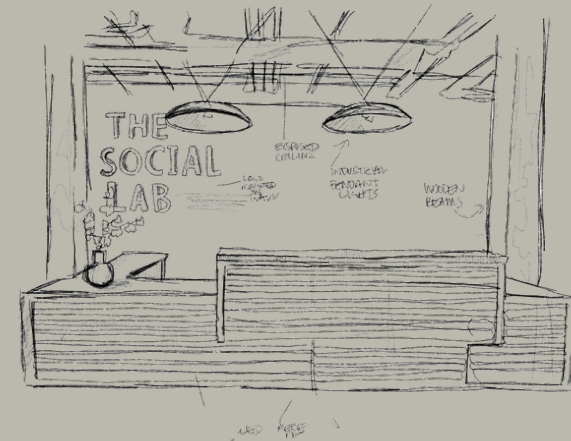
(01)



SOCIAL LAB



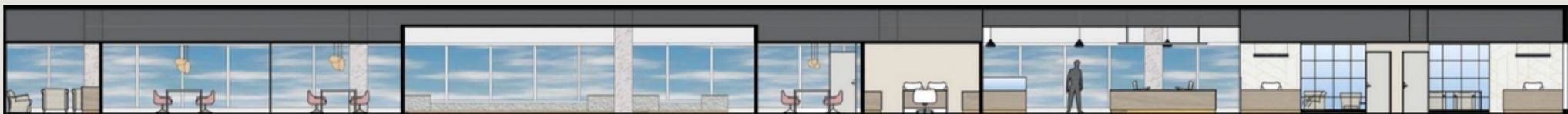
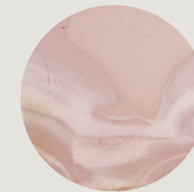
THE SOCIAL LAB IS A COMMUNITY RESOURCE CENTRE I CO-DESIGNED TO PROVIDE ACCESSIBLE PROGRAMS AND INTERACTIVE EDUCATIONAL RESOURCES FOR ALL AGES. THE CONCEPT USES INDUSTRIAL MATERIALS LIKE CONCRETE AND BRICK TO CREATE AN INVITING SPACE, EMPHASIZING SUSTAINABILITY AND COMMUNITY COHESION.



MIRESBALL



THIS CONCEPT-BASED OFFICE DESIGN EMBODIES MODERN ELEGANCE AND PROFESSIONALISM. THE SPACE BALANCES CLEAN GEOMETRIC LINES WITH SUBTLE ORGANIC FORMS TO CREATE VISUAL HARMONY. A NEUTRAL PALETTE ACCENTED WITH WARM TONES AND METALLIC FINISHES ADDS DEPTH AND SOPHISTICATION. THOUGHTFUL LIGHTING AND CUSTOM-DESIGNED FEATURES, INCLUDING A STATEMENT RECEPTION DESK, ENHANCE BOTH FUNCTIONALITY AND BRAND PRESENCE.

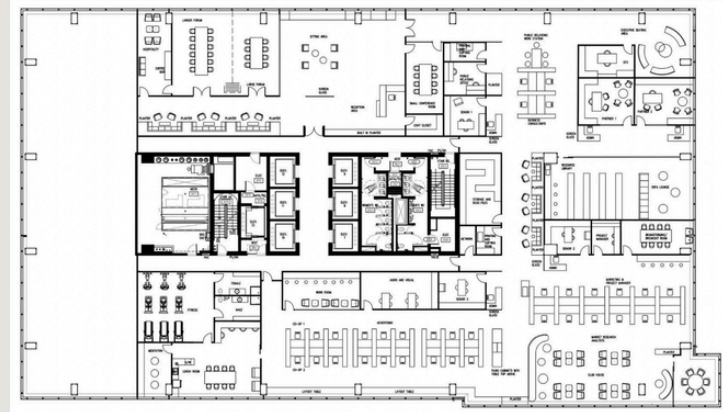


MIRESBALL DRAWINGS



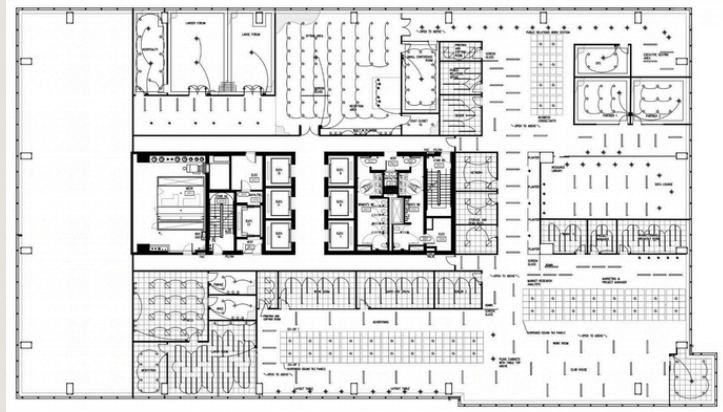
FLOOR PLAN

(01)



RCP

(02)



MIRESBALL

MATERIALITY

Flooring:



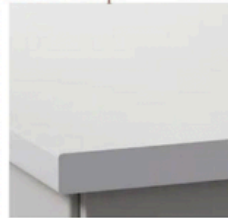
Item Number: 4822N
 Product: Plexwood
 Colour: Birch
 Size: 48"x48"x1"
 Shape: Tile
 Low gloss
 Source:
<https://plexwood.com/uk/products/tile>

Accent Wall Finish:



Plaster effect done by contractor.

Countertop:



Product: Laminate
 Colour: Solid White
 Thickness: 1"
 Source:
<https://www.keplerhpl.com/product/Kepler-13mm-White-Color-HPL-Compact-Laminate-Board.html>

Furniture:



Custom made sofa/ lounge seat with built in tables on either end.
 Source:
<https://www.benwhistler.com/commercial>

Wall Finish:



Item Number: SW 6091
 Product: Paint
 Colour: Reliable White
 Sheen: eg-shell
 Base : Extra white
 Source:
<https://www.sherwin-williams.com/painting-contractors/products/pro-industrial-acrylic-coating/colorPartNumber-SW6091>

Decorative Wall Finish:



Item Number: MSLCORFHP20
 Product: Marble slab
 Product Colour: Corfu
 Thickness: ¾"
 Source:
<https://ciot.com/en/slabs/line-corfu-mx>

Desk front:



Item Number: 12525
 Product: Wall Tile
 Colour: Cream
 Material: Ceramic
 Finish : Gloss
 Dimensions: 10cmx40cm x8mm
 Source:
<https://www.tiles-direct.com/wall-tiles-c26/arnold-10cm-x-40cm-c2143/arnold-cream-gloss-10cm-x-40cm-wall-tile-p4881>

Seating Fabric:



Item Number: 513541
 Product: Upholstery
 Pattern: Primo Lino
 Colour: Glacier
 Source:
<https://www.robertallendesign.com/primo-lino-glacier-513541>

SHISEIDO

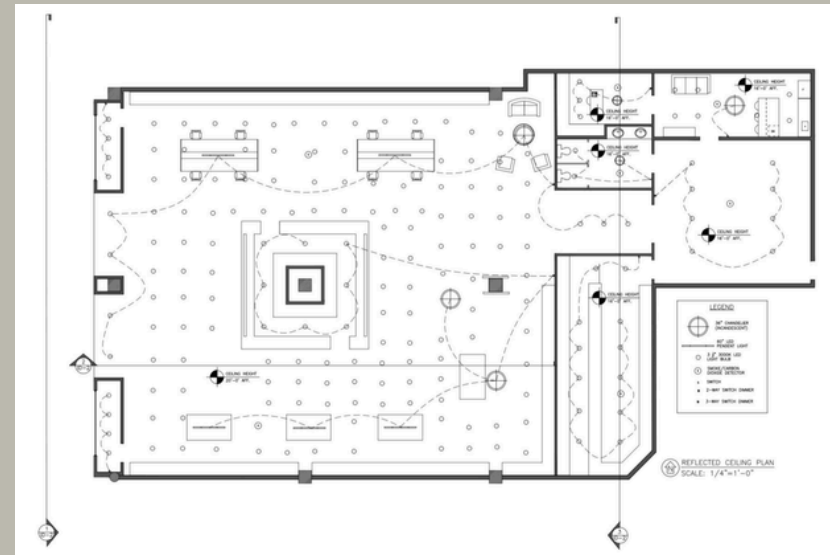


A CONCEPT STOREFRONT AND INTERIOR DESIGN INSPIRED BY SHISEIDO'S DISTINCTIVE LUXURY SKINCARE HERITAGE. THE SPACE BLENDS REFINED GOLD AND BLACK ELEMENTS WITH BOLD, STATEMENT WALLPAPER, ORGANIC-SHAPED MIRRORS, AND UNIQUELY DESIGNED INTERACTIVE PRODUCT DISPLAY ZONES. A CAREFULLY CONSIDERED LAYOUT CREATES AN INTUITIVE, FLUID CIRCULATION THAT ENHANCES WALKABILITY WHILE MAXIMIZING PRODUCT VISIBILITY AND ENGAGEMENT.



SHISEIDO

DRAWINGS



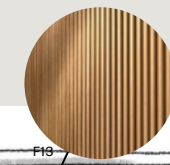
PSSC



THE POST SECONDARY SUCCESS CENTRE IS A CONCEPT INCLUSIVE ACADEMIC FACILITY DESIGNED TO SUPPORT DIVERSE LEARNING STYLES. IT FEATURES A RANGE OF SECLUDED AND COMMUNAL SPACES, INTEGRATING NATURE AND TECHNOLOGY TO CREATE A HARMONIOUS, STRESS-FREE ENVIRONMENT. THE DESIGN PROMOTES PRODUCTIVITY THROUGH ELEMENTS LIKE NATURE VIEWS, ACOUSTIC PRIVACY, ADJUSTABLE DAYLIGHT SENSORS, AND MUSIC PODS, OFFERING A UNIQUE AND CUSTOMIZABLE TUTORING EXPERIENCE

PSSC

CONCEPT



Reception/waiting room

Glass mullion organic shaped walls

Cafe

Ottomans by Archiproducts

Planter

"Color Palettes To Help Heal ADHD and Depression" (Donna Frasca, Intuitive Color Expert)

Way Finding directional guide adhered to concrete flooring

Concrete Floor: existing Matte Finish

Entry Hallway

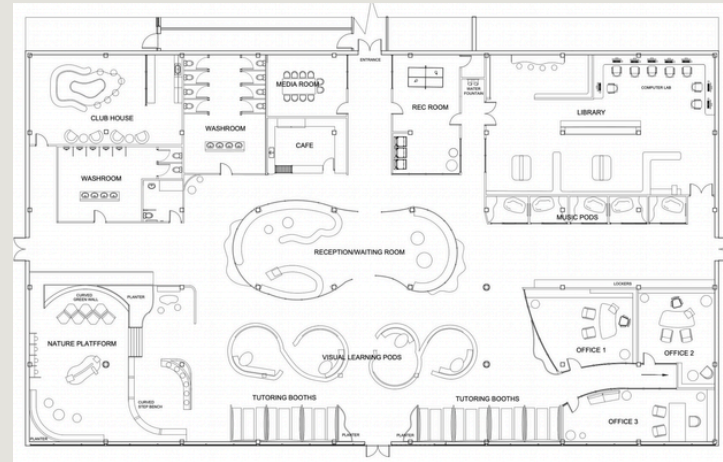
PSSC

DRAWINGS



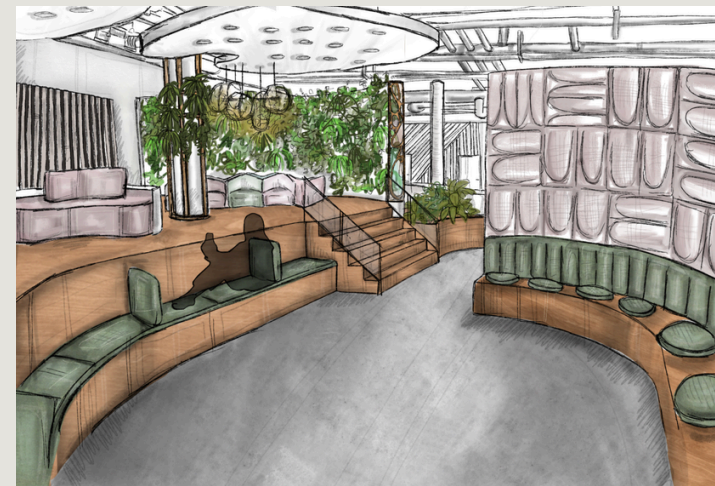
FLOOR PLAN

(01)



CONCEPT SKETCH

(02)





To deliver thoughtful,
impactful design for your
projects.



[sarahlevininteriors](#)



sarahlevvine@gmail.com



(647)-830-9951